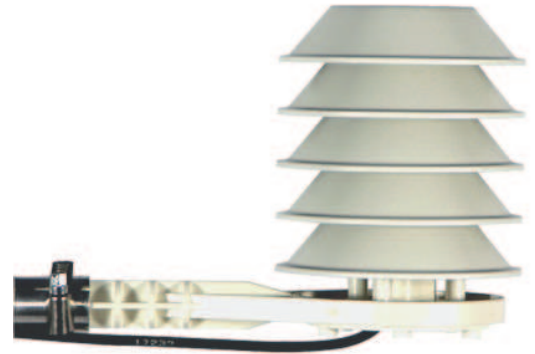
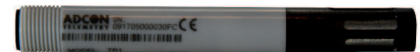


# ADCON TR1 Temperature & Relative Humidity Sensor

The TR1 provides accurate and reliable measurement of temperature and relative humidity. The fully sealed sensor body contains a pt1000 sensor, a capacitance humidity element and an integrated amplifier. Calibration and compensation data is stored inside the sensors electronics. The humidity element is covered by a protective coating to extend its life and avoid erroneous readings due to build-up of dust or chemicals.



Power consumption is very low, with a stability time of less than 2 seconds. The sensor elements are protected within an ultra-fine wire mesh screen cap. Sinter caps for extremely dusty and corrosive environments are also available.



TR1 Sensor

The sensor is mounted within a 5 element radiation shield, made of durable thermoplastic. The radiation shield is coated black on the inside to avoid heat-buildup. It is fixed to an aluminium arm, fitted with a mast mounting bracket and clamps. A 3m 7-pin Binder cable supports direct connection to an Adcon RTU.

## Applications

- Meteorological and hydrographical weather stations
- Livestock monitoring
- Industrial monitoring
- Storage and silo monitoring



TR1 Sensor Elements

## Technical Data

Dimensions	L: 415 x H: 190 x Ø 102 mm Sensor only: 100mm x 12 mm Ø	Response Time	less than 2 sec.
Weight	615 g	Storage Temperature	-40°C ... +80°C
Temperature sensor	pt1000 (DIN A)	Power Consumption	4.5 ... 15VDC
Measuring range	-40°C ... +60°C	Cable & Connector	3m, 7-pin M9 male Binder conn.
Accuracy at +20°C	< ± 0.2°C	Mounting	mast mounting bracket for poles with Ø of 35-40mm, clamps included
Humidity sensor	HC101	Ordering information:	
Measuring range	0% ... 100%	200.733.031	Adcon TR1 Combisensor
Accuracy at +20°C	± 2% in range from 0 - 90% ± 3% in range from 90 - 100%	800.000.410	Sinter filter cap